

# Are We Facing the Future?

A Retrospective Audit of Acute General Paediatric Admissions at a Regional Paediatric Hospital

Kendrew-Jones T, Stewart E, Farquharson S, Nairn L, Bland R, Forbes O

General Paediatric Department, Royal Hospital for Children, Glasgow, UK. Contact: [thomaskendrew-jones@nhs.net](mailto:thomaskendrew-jones@nhs.net)

## Introduction

- The RCPCH *Facing the Future: Standards for Acute General Paediatric Services 2015*, outline requirements to provide safe, sustainable, high-quality care.<sup>1</sup>
- Phased reconfiguration of acute services took place at our tertiary paediatric hospital the Royal Hospital for Children, Glasgow (RHC) between May 2018 and August 2019.

## Aim

To assess whether Standards 2, 3 & 5 are being achieved, and if ongoing service changes have improved performance against Standards.

## RCPCH Facing the Future standards

2

Every child admitted is seen by a Tier 2 doctor or above within 4 hours

3

Every child admitted is seen by a consultant paediatrician within 14 hours

5

Every child referred for a paediatric opinion should be seen or discussed with a senior paediatrician (Tier 2 or above)

## Methods

- Retrospective case note review of acute medical admissions (May and September 2018 / 19).
- All admissions on 12 pre-selected days per month reviewed.
- Time to review: recorded from admission to acute medical unit (Clinical Decision Unit or ward).
- Compliance assessed against Standards 2, 3 & 5 for all patients.
- Tier 2 definition: ≥ST4, including specialty doctors and advanced nurse practitioners.

## Summary of changes implemented

Aug 2018

- Amalgamation of local district general inpatient service (RAH Paisley) with RHC Glasgow
- Expansion of consultant workforce with new resident working pattern (9am-10pm)

Sept 2018

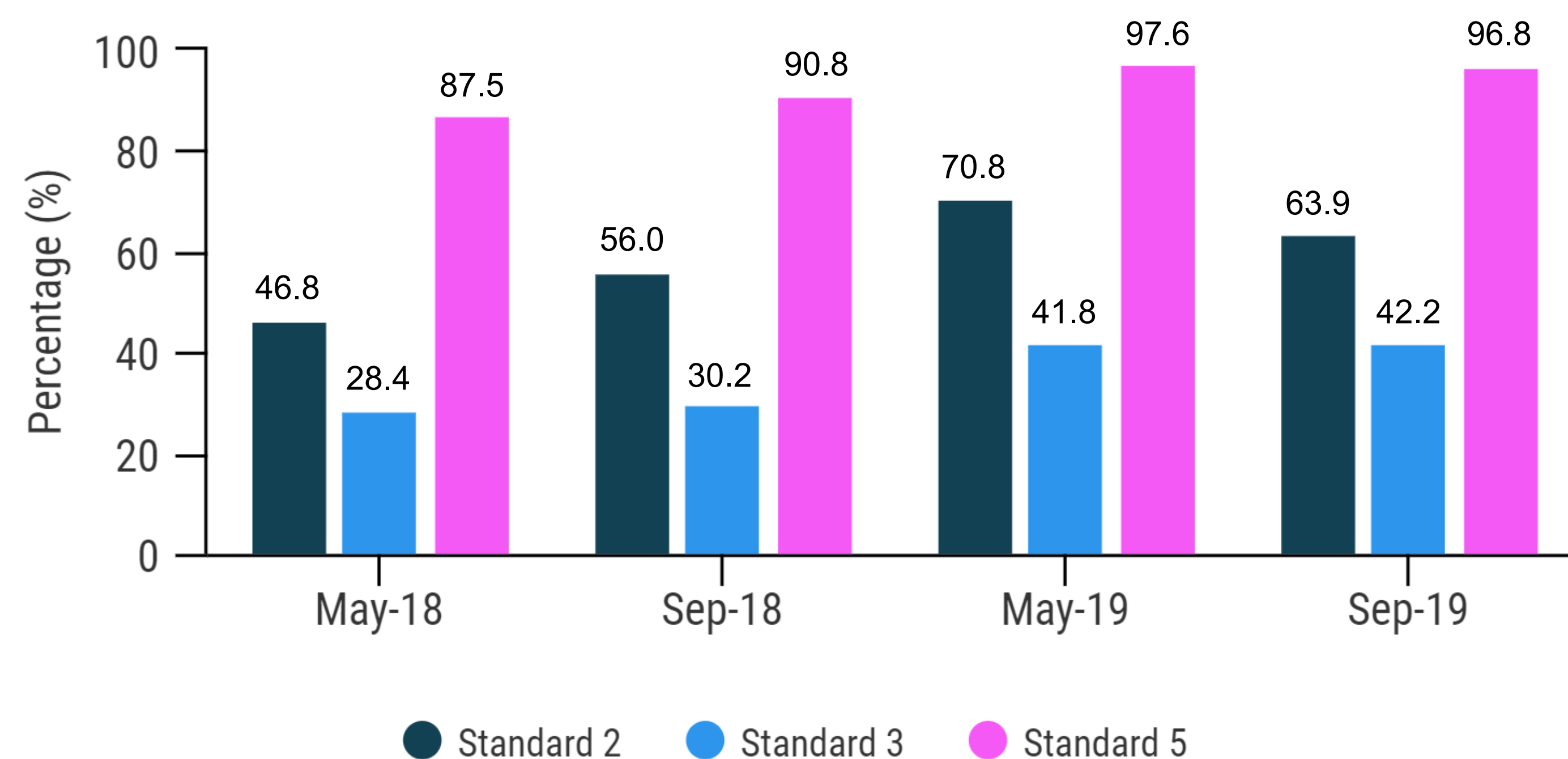
- Local dissemination of initial standard compliance results
- Quality improvement activities continued: local education and posters

Aug 2019

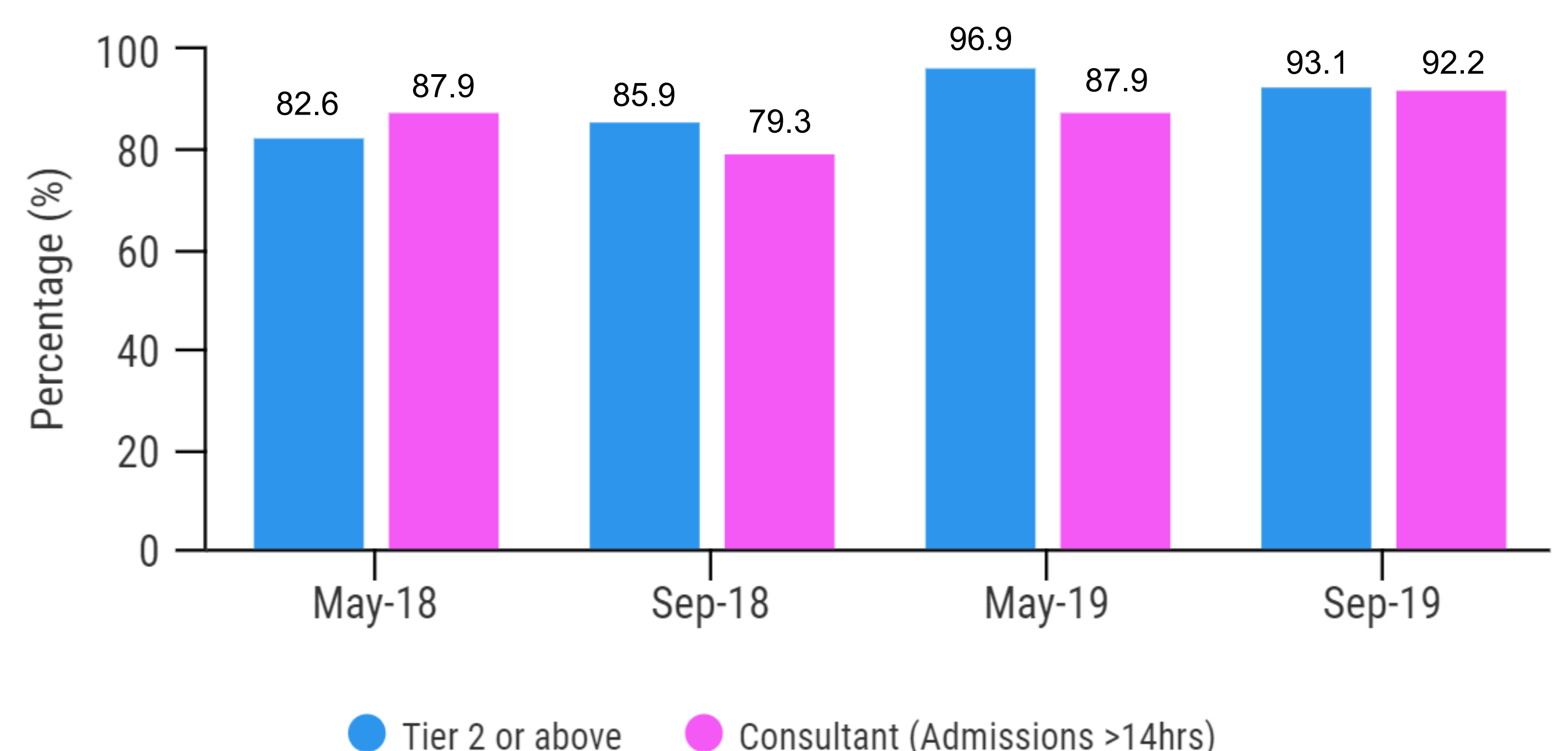
- Increased senior medical paediatric presence in Emergency Department
- New pathway created for 'short stay' patients, to improve efficiency of service

## Results

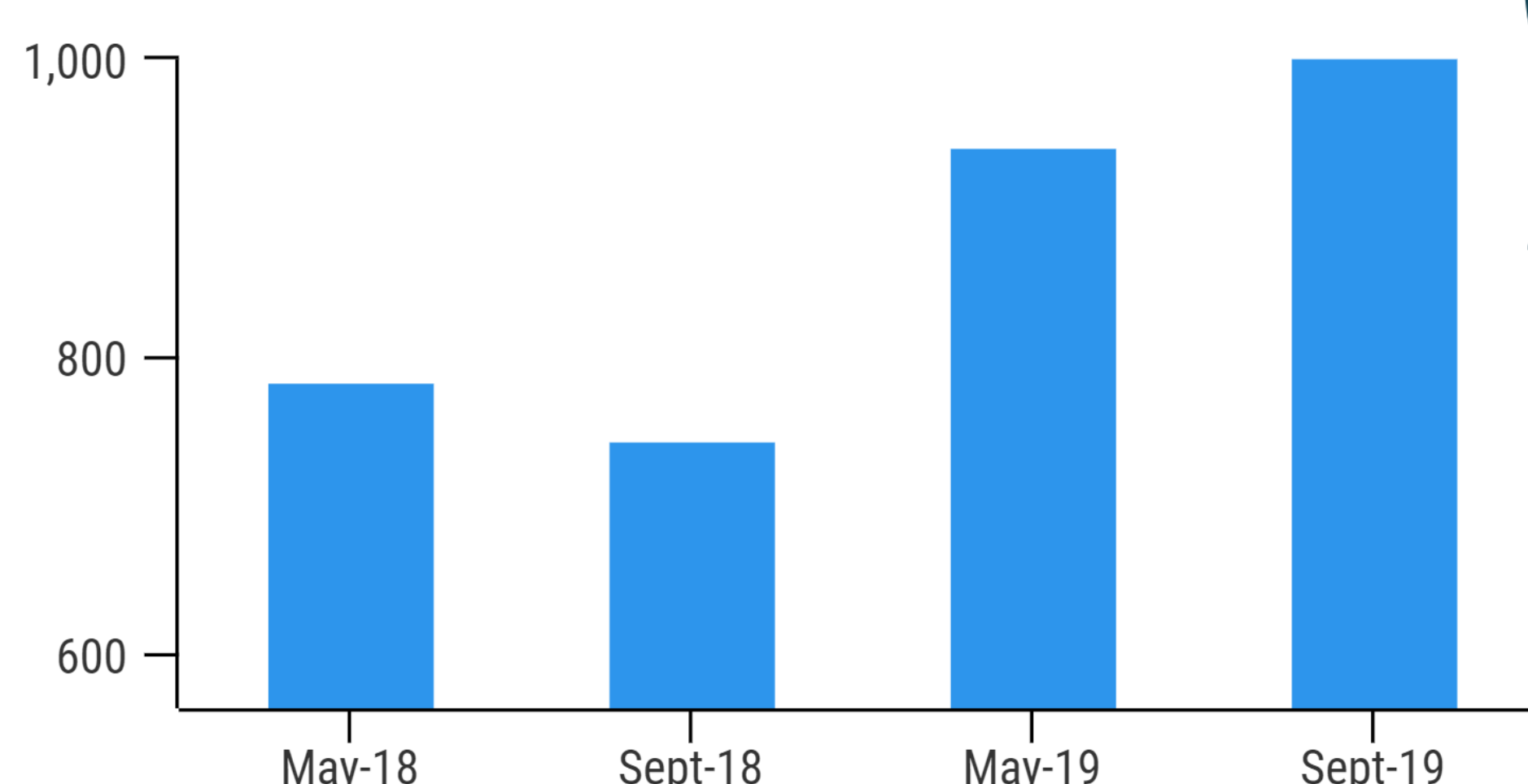
### Admissions Achieving Standards 2,3&5



### Admissions with Senior Review



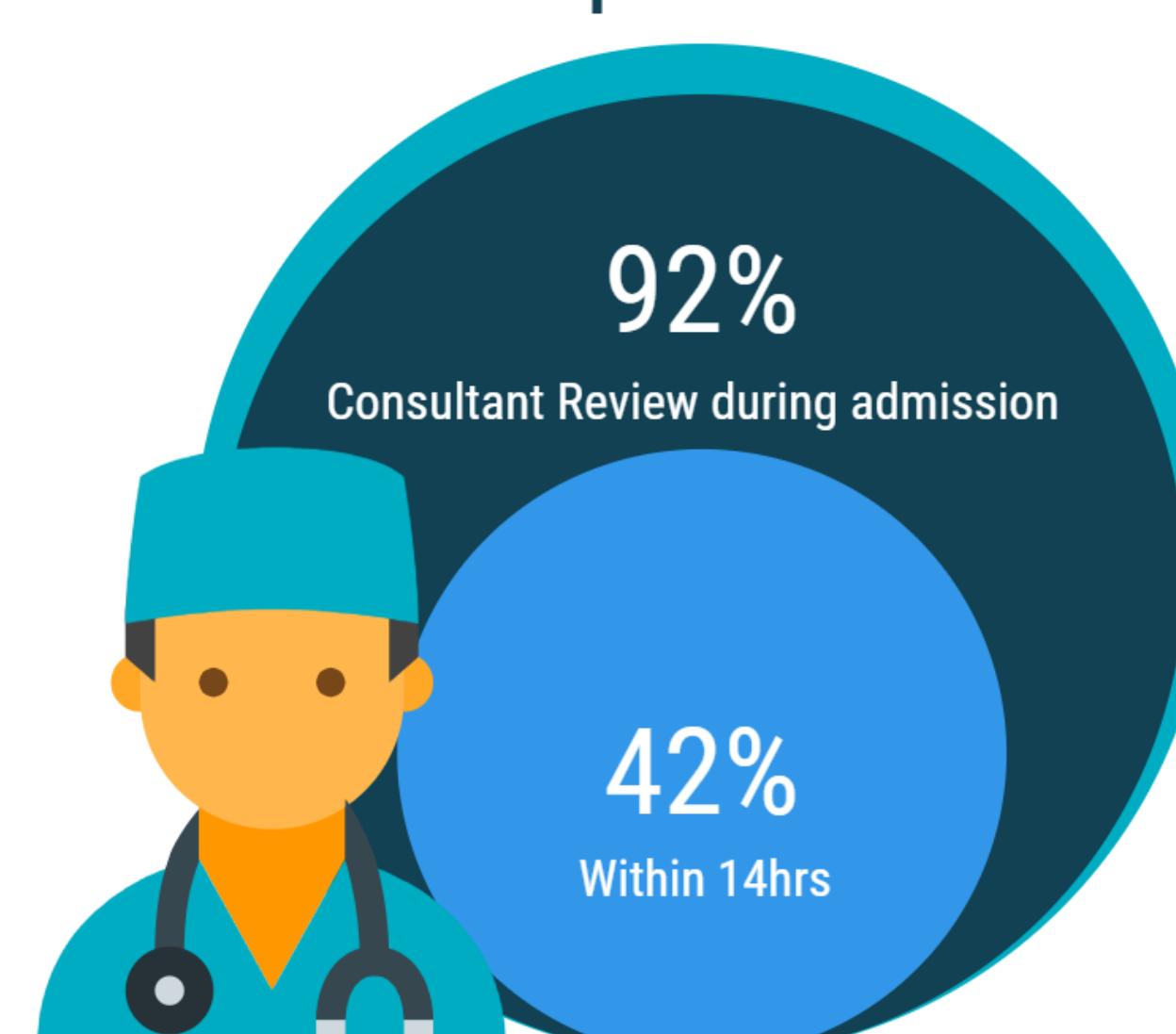
### Total Number of Admissions



Acute general paediatric admission rates are increasing



### Sept 2019



### TIME TO FIRST REVIEW

Average time has improved from 84mins (May 2018) to 34mins (Sept2019)

34mins



## Conclusions

- By expanding consultant resident hours and making changes to processes within our receiving team work, we have reduced the average time to first review and improved compliance with Standards 2, 3 and 5.
- Acute paediatric admission rates are rising and this makes compliance with the Standards more challenging.
- Senior clinician review of most children occurs during admission; early consultant review remains the biggest challenge.

## References

- Royal College of Paediatrics and Child Health. Facing the Future: Standards for acute general paediatric services, 2015. Available: [https://www.rcpch.ac.uk/sites/default/files/2018-03/facing\\_the\\_future\\_standards\\_for\\_acute\\_general\\_paediatric\\_services.pdf](https://www.rcpch.ac.uk/sites/default/files/2018-03/facing_the_future_standards_for_acute_general_paediatric_services.pdf)
- Royal College of Paediatrics and Child Health. Implementation of the Facing the Future: Standards for Acute General Paediatric Services. Available: [https://www.rcpch.ac.uk/sites/default/files/2018-11/ftf\\_implementation\\_planv2.pdf](https://www.rcpch.ac.uk/sites/default/files/2018-11/ftf_implementation_planv2.pdf)